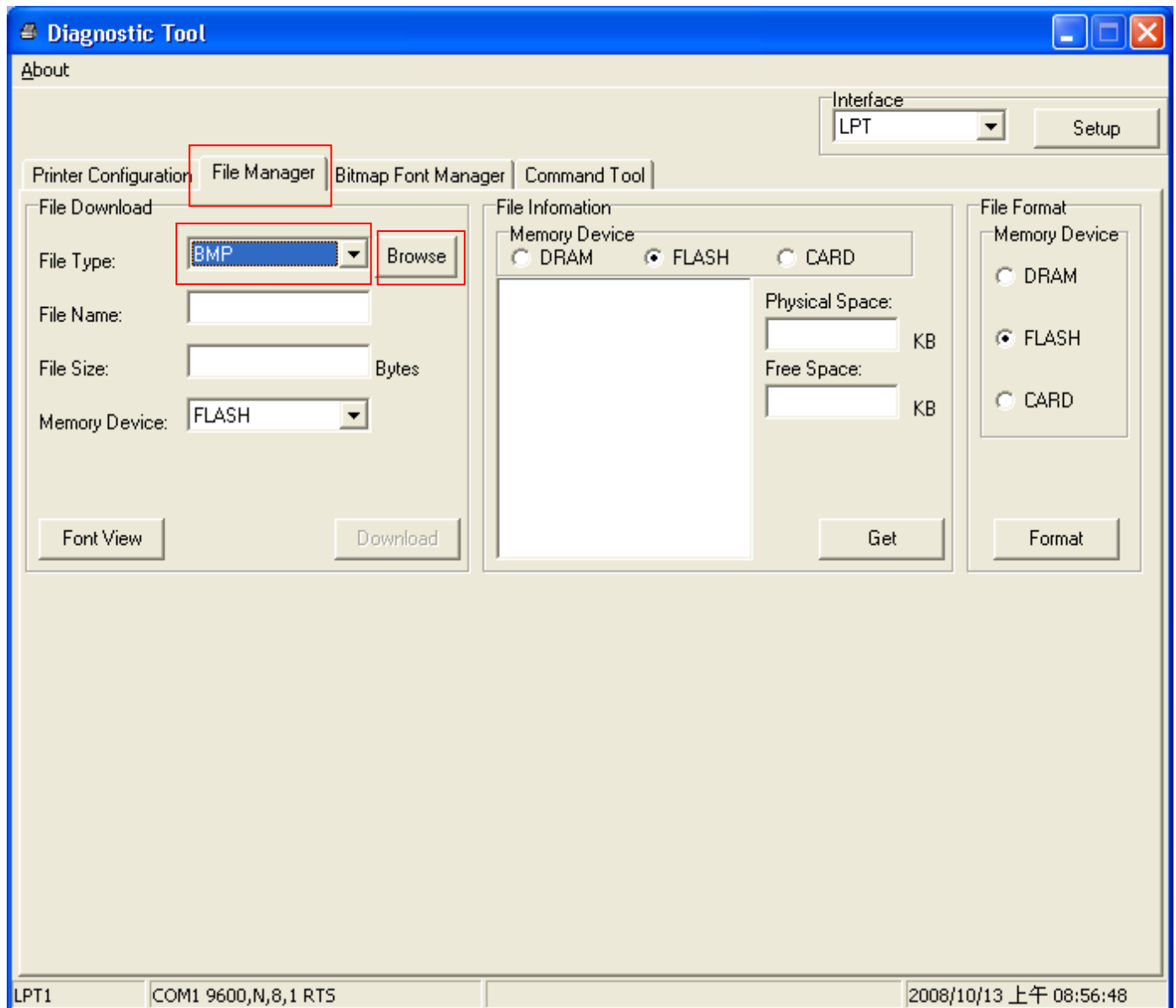


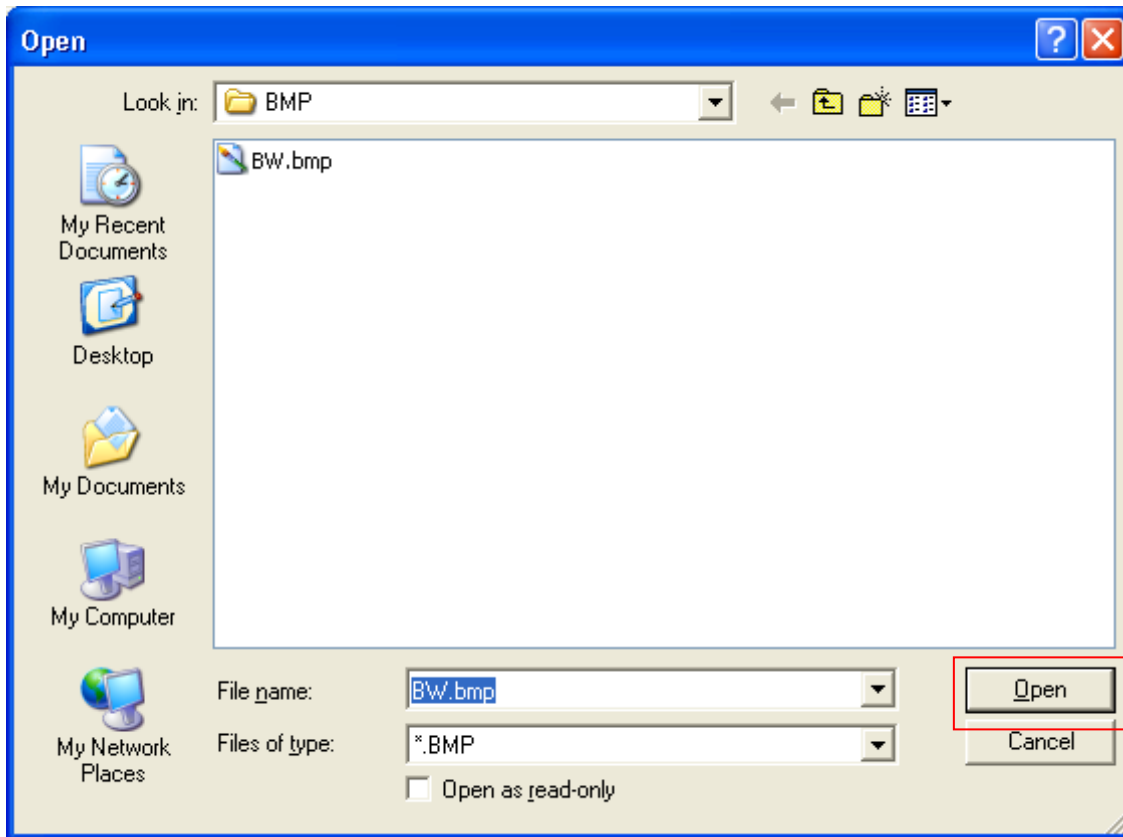
The procedure of downloading a BMP/PCX file into printer is below.

1. The graphic format should be monochrome, 16-color or 256-color.
2. Downloading a BMP/PCX file into the printer's memory.
3. Using PUTBMP/PUTPCX to print the picture.

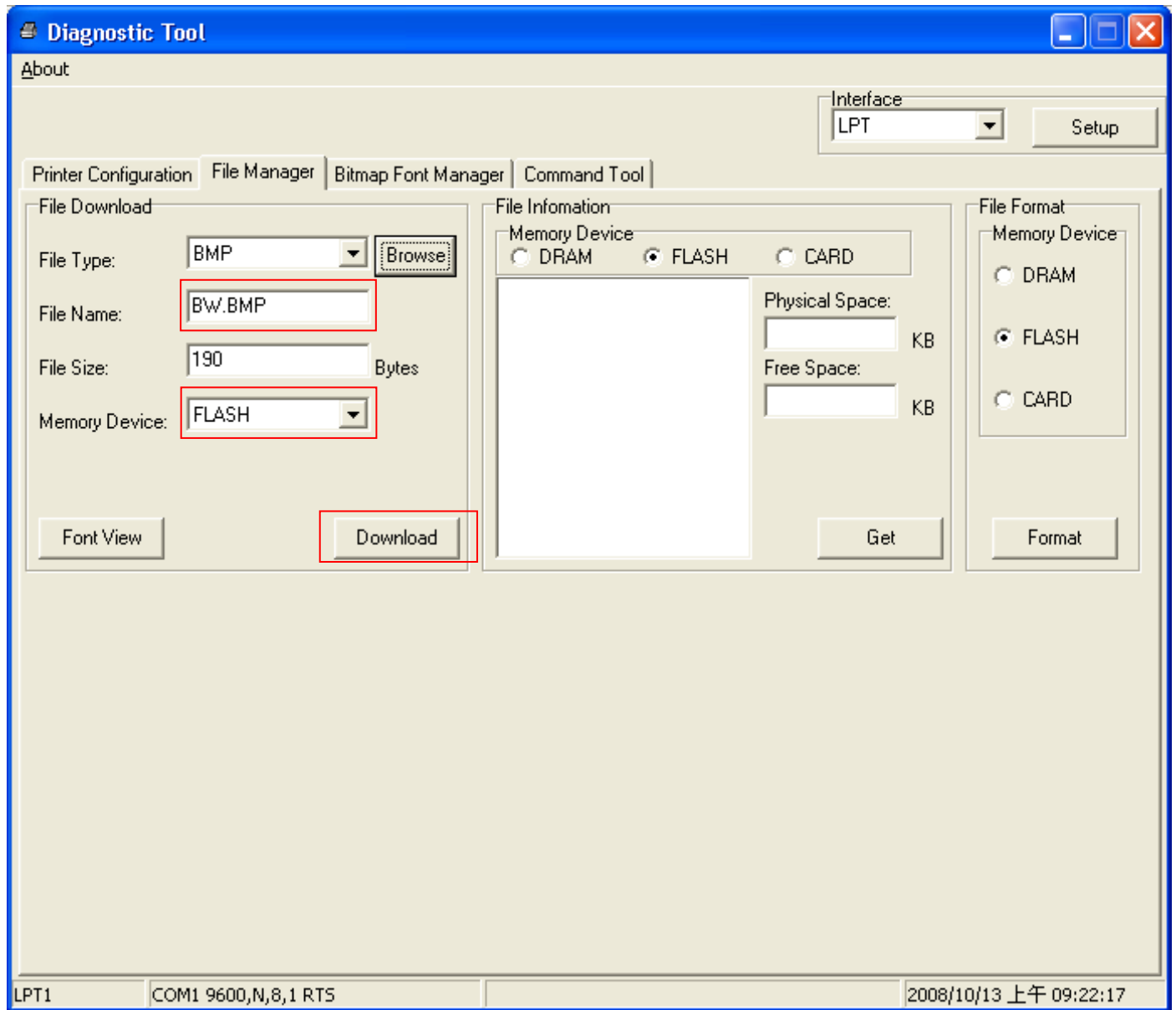
Following is the procedure of downloading BMP file by Diagnostic Tool. And you can get the Diagnostic Tool on TSC website.

1. Enter the tab [**File Manager**], and select the [**File Type**] as [**BMP**]/[**PCX**]. Click [**Browse**] to select a BMP/PCX file and click [**OPEN**].





2. Select [**Memory Device**] and click the button [**Download**] to start downloading.



3. After file downloading, enter the tab [**Command Tool**] and edit a TSPL2 program to print the BMP graphic on label.

