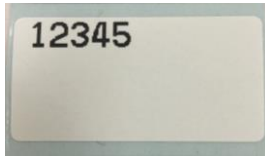
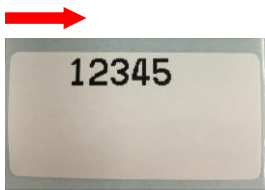
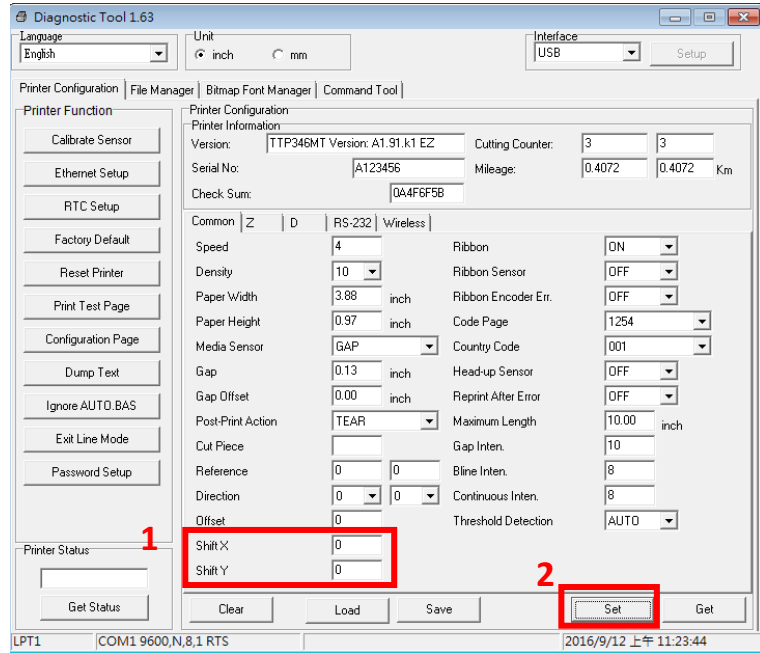


How to Adjust Print Position

Print result.



Original Settings



1. Input Range:

-XXX ~ +XXX

(203DPI:

1mm=8 dots)

(300DPI:

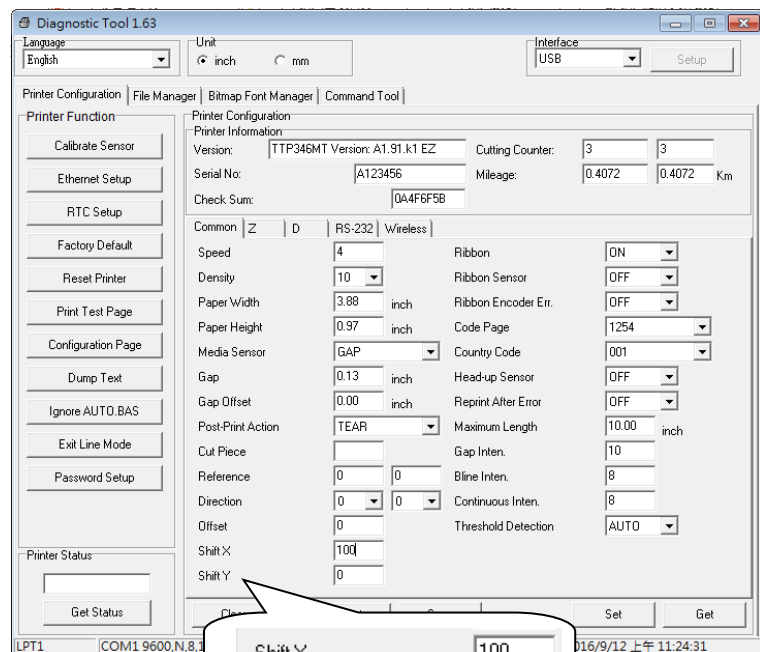
1mm=12 dots)

(600DPI:

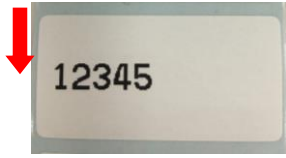
1mm=24 dots)

2. Press Set

Shift X



Shift X 100
Shift Y 0



1. Input Range:

-XXX ~ +XXX

(203DPI:

1mm=8 dots)

(300DPI:

1mm=12 dots)

(600DPI:

1mm=24 dots)

2. Press Set

Shift Y

